

HOW TO CHOOSE YOUR RIGHT SIZE

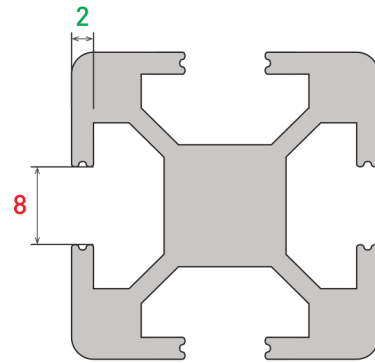
Ex.) WELG(8-2)023

groove width

frame thickness

inner diameter of AL-Easy: 23(Φ)

※Applicable to several manufacturer's aluminum frame when the dimensions above are satisfied.

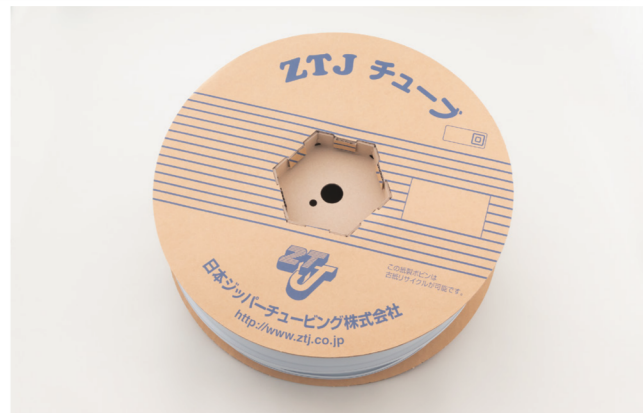


PRODUCT LIST

Part No.	Channel Width	Frame Thickness	Tube Inner Diameter	Standard Length
WELG(6-2) 013	6.0~6.5mm	2.0~2.5mm	φ13	20m
WELG(6-2) 025	6.0~6.5mm	2.0~2.5mm	φ25	20m
WELG(8-2) 023	8.0~8.5mm	2.0~2.5mm	φ23	20m
WELG(8-4) 025	8.0~8.5mm	4.0~4.5mm	φ25	15m
WELG(10-6) 030	10.0~10.5mm	5.5mm~6.0mm	φ30	15m

MATERIAL SPECIFICATION

Part No.	WELG
Surface Color	Gray · Black
Material	Semirigid PVC
Operating Temperature	-15°C~60°C
Remarks	Flame retardancy: equivalent to UL224 VW-1 (not certified), RoHS: Compliant to RoHS 10 substances



Standard Length Spooled on Reel

Zippertube Attached for Aluminum Frame

AL-Easy

アルイージー

**SIMILAR COLORING TO ALUMINUM FRAME!
NEAT AND CLEAN APPEARANCE!!**

**Just mount
into aluminum
frame's groove!!**



CONTACT

東部営業部

〒104-0061 東京都中央区銀座8-14-14
銀座昭和通りビル
TEL:03-3544-0096(代) FAX:03-3542-5867

East Sales Office

Ginza-Showa-dori Bldg., 8-14-14, Ginza,
Chuo-ku, Tokyo, 104-0061, Japan
PHONE:+81-3-3544-0096
FAX:+81-3-3542-5867

西部営業部

〒530-0001 大阪府大阪市北区梅田2-4-13
阪神産経桜橋ビル
TEL:06-6457-3135(代) FAX:06-6341-6055

West Sales Office

Hanshin-Sankei-Sakurabashi Bldg., 2-4-13,
Umeda, Kita-ku, Osaka, 530-0001, Japan
PHONE:+81-6-6457-3135
FAX:+81-6-6341-6055

香港事務所

香港九龍長沙灣道782號
香港中心27樓08-09室
TEL:+852-3113-0800 FAX:+852-3113-0803

Hong Kong Office

Unit 8 & 9, 27th Floor, Clifford Centre,
782 Cheung Sha Wan Road, Kowloon, Hong
Kong
PHONE:+852-3113-0800
FAX:+852-3113-0803

POINT

1

Easy Bundling!

POINT

2

Easy Cable Protection!

POINT

3

Easy Off!

POINT

4

Improve Work Efficiency!

Check details
on YouTube





Zippertube Attached for Aluminum Frame

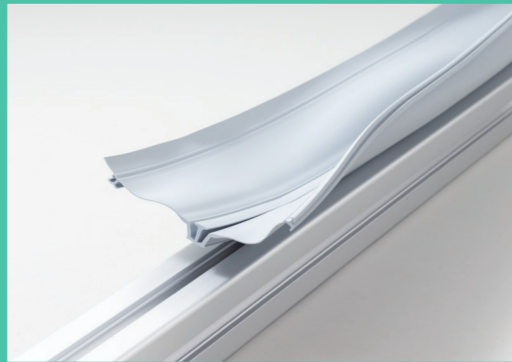
AL-Easy, tube for the cable bundling and protection, is easily installed on aluminum frame which is widely used for the facility unit, cradle, and clean booth.

Cables around aluminum frame are bundled with AL-Easy. It's perfect for both cable management and neat appearance.

※Flame retardancy: equivalent to UL224 VW-1(not certified) RoHS: Compliant to RoHS 10 substances

HOW TO INSTALL

STEP
1



Put Convex Area of AL-Easy Along on The Groove of Aluminum Frame

Check the dimensions of aluminum frame groove and convex area of AL-Easy. Put the convex area along on the groove.

STEP
2



Push to Downward Direction

Push firmly from above until the narrow channel on AL-Easy is not seen on the surface.

STEP
3



Instllation Complete!

No narrow channel on AL-Easy is seen, installation is complete!

AL-Easy should fit into the groove firmly as this image.



FEATURES

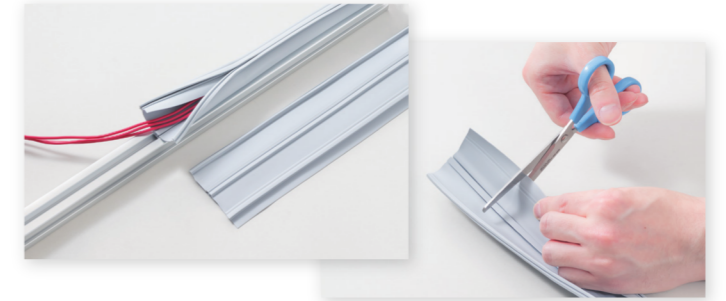
POINT 1 EASY BUNDLING!!

Can be easily installed without tools, just pinch with your fingers.



POINT 2 EASY CABLE PROTECTION!! NEAT AND CLEAN APPEARANCE

It's safe to bundle and protect exposed cables completely. Easily cut into preferred length with scissors, and also make holes.



POINT 3 EASY OFF!!

AL-Easy is attached on aluminum frame's groove firmly and cannot be off easily in a vertical direction. Pull the edge of AL-Easy to easy removing and it's repeatedly usable.



POINT 4 IMPROVE WORK EFFICIENCY!!

Cable management on aluminum frame is very easy and quick with AL-Easy's installation, bundling, and removing. AL-Easy enables you to shorten production hours.

APPLICATION EXAMPLE

